

# CAPITIS Studios/Berlin

## *Studio II / 1st floor*

---

### Facilities studio II:

- 37 sqm studio area
- 3.10 m ceiling height | daylight alignment west
- power supply: 230 V | three-phase: 16 amp
- 2 windows: h: 2.40 x w: 0.7m | h: 2.40 x w: 1.70m with balcony access (shadable with sliding lamella tubes)
- movable partition wall/ background wall
- cement-fine-screed, grey lacquered
- studio can be locked via glass sliding door
- lift

### Included:

By renting Studio II, the following premises and facilities will be included:

- representative, glazed reception area
- central sound system with integrated ceiling loudspeakers in a single unit in all rooms

### Basement floor:

- separate entrance via stairs
- make-up room & wardrobe/ coat stand
- bowboard with steamer
- spacious, modern toilets
- barrier-free, wheelchair-accessible toilet & shower
- lift access to raised ground floor and upper floor

### 1st floor:

- integrated bar with professional refrigerator bar & dishwasher
- kitchenette with oven, microwave & dishwasher
- lunch-/ dinner table with 2 benches
- espresso- & coffee machine
- lounge area
- balcony
- lift access to raised ground floor & basement floor

### Studio II

Daily rental photo production/ standard\*: € 550,-

Pricing for advertising, film or events at individual inquiry.

\* our daily standard rate includes the following:

- shooting hours: 10 h/ day additional shooting time: 10% of daily rate per hour
- electricity (excl. three-phase, e.g.: HMI/ tungsten light)
- hot drinks (coffee/ tea) for up to max.10 persons beyond that € 3,-/ per person all in

# CAPITIS Studios/Berlin

*Studio II / 1st floor*

*Additional facilities (subject to charges):*

- electricity: three-phase (e.g.: HMI/ tungsten light)
- parking/ car parks around the corner
- during winter times: heating: € 50,-/ day
- cold beverages: € 10,-/ per person/ day
- studio attendant: € 160,-/ 10 h
- final clean-up: € 80,-

*Any other customary additional service on request, e.g.:*

- studio assistants
- catering
- set-building
- lightgear
- backgrounds
- shuttle service
- security
- and many more...

Please contact us for special rates regarding extended catalogue productions, events or films & for teams larger than 15 persons.

All prices excl. VAT.

All services are subject to the GTC.

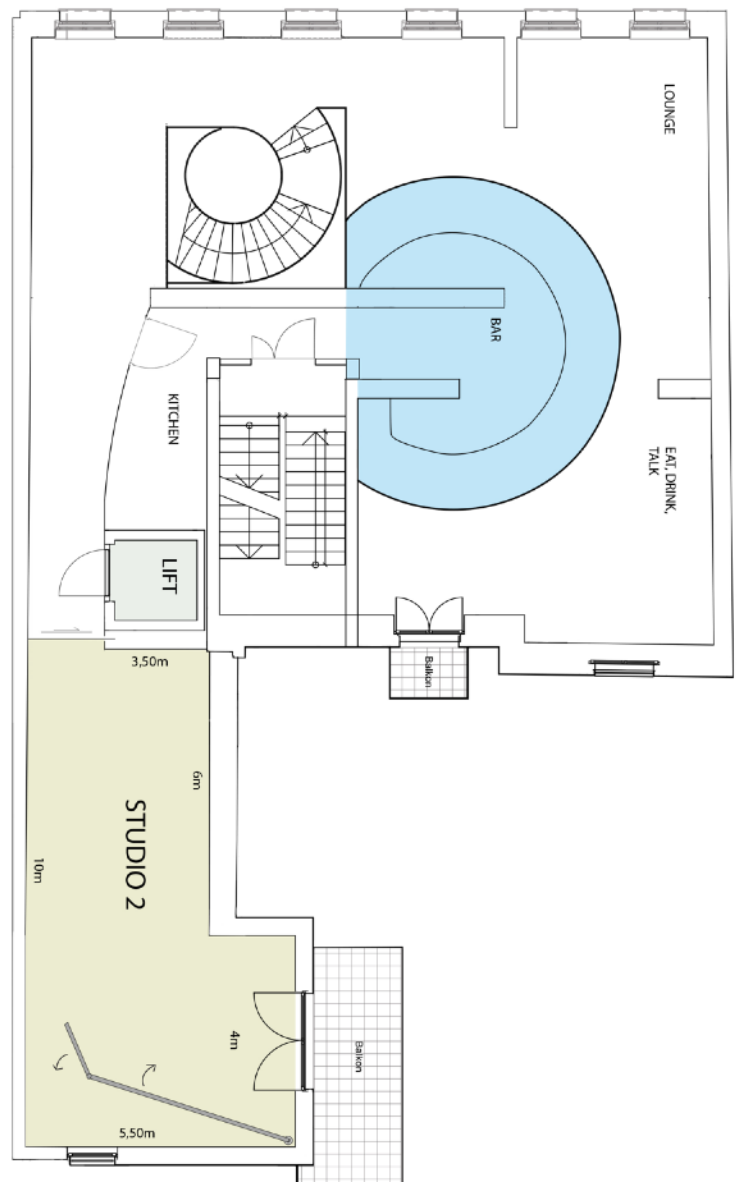
*CAPITIS Studios/Berlin  
Kronenstraße 71  
D-10117 Berlin*

U6/ U2 Stadtmitte  
5 min walking distance to Gendarmenmarkt

[info@capitis-studios.de](mailto:info@capitis-studios.de)  
[www.capitis-studios.de](http://www.capitis-studios.de)

*Contact:*

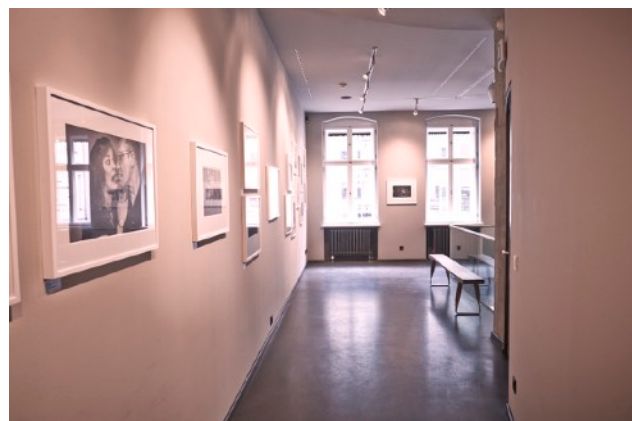
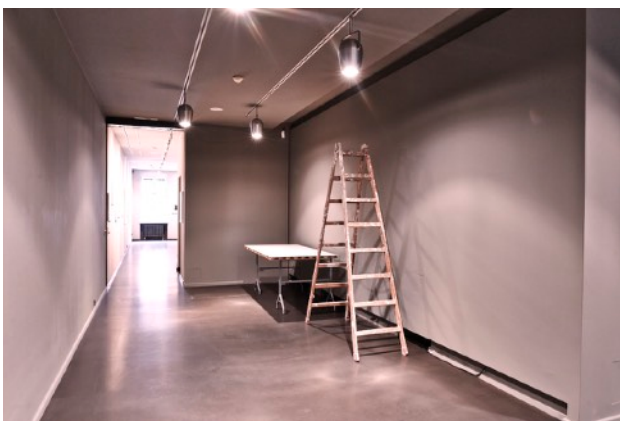
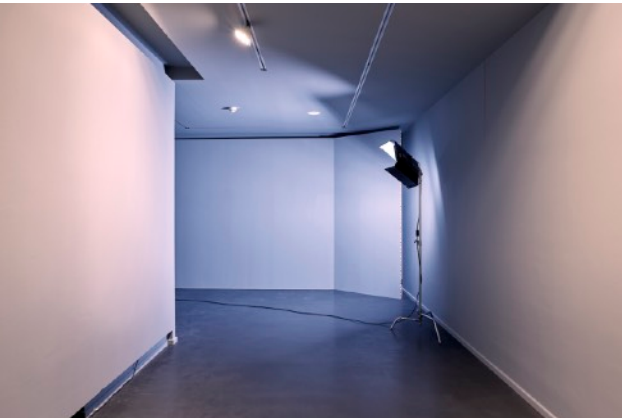
Susann Jansohn // studio management  
mobile: +49 - (0) 173 - 311 39 05  
phone: +49 - 30 - 310 111 60  
fax: +49 - 30 - 310 111 62



Project	Label
CAPITIS	Plan Ground 2
Kronenstraße 71 10117 Berlin	

# CAPITIS Studios/Berlin

*Studio II / 1st floor*



# CAPITIS Studios/Berlin

*Studio II / Basement floor & 1st floor*

